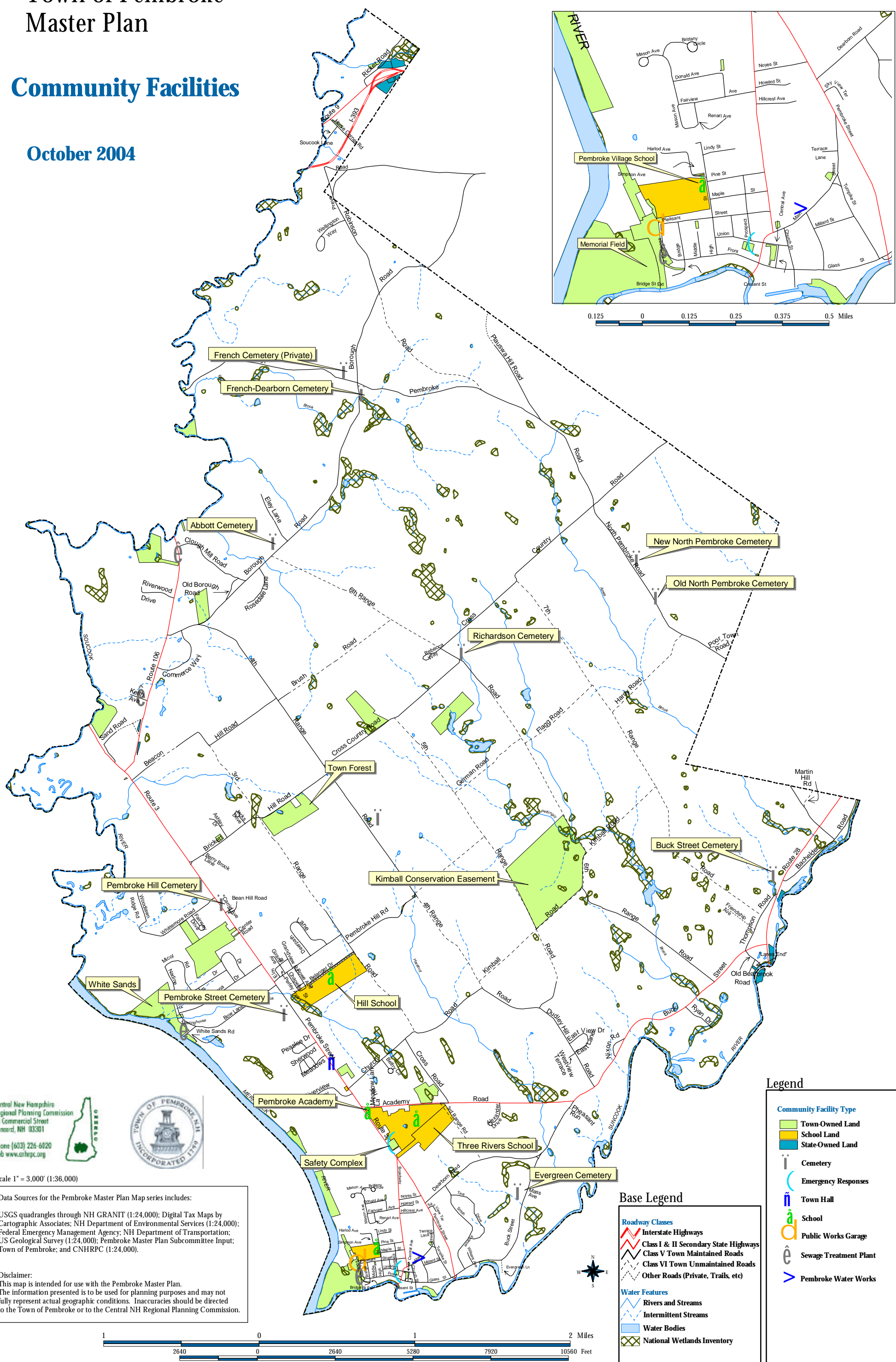


Town of Pembroke Master Plan

Community Facilities

October 2004



Central New Hampshire
Regional Planning Commission
28 Commercial Street
Concord, NH 03301
phone (603) 226-6020
web www.cnhrpc.org





Scale 1" = 3,000' (1:36,000)

Data Sources for the Pembroke Master Plan Map series includes:

USGS quadrangles through NH GRANIT (1:24,000); Digital Tax Maps by Cartographic Associates; NH Department of Environmental Services (1:24,000); Federal Emergency Management Agency; NH Department of Transportation; US Geological Survey (1:24,000); Pembroke Master Plan Subcommittee Input; Town of Pembroke; and CNHRPC (1:24,000).

Disclaimer:
This map is intended for use with the Pembroke Master Plan.
The information presented is to be used for planning purposes and may not fully represent actual geographic conditions. Inaccuracies should be directed to the Town of Pembroke or to the Central NH Regional Planning Commission.

Legend

Community Facility Type

- Town-Owned Land
- School Land
- State-Owned Land

Emergency Responses

- Cemetery
- Emergency Responses
- Town Hall
- School
- Public Works Garage
- Sewage Treatment Plant
- Pembroke Water Works

Base Legend

Roadway Classes

- Interstate Highways
- Class I & II Secondary State Highways
- Class V Town Maintained Roads
- Class VI Town Unmaintained Roads
- Other Roads (Private, Trails, etc)

Water Features

- Rivers and Streams
- Intermittent Streams
- Water Bodies
- National Wetlands Inventory