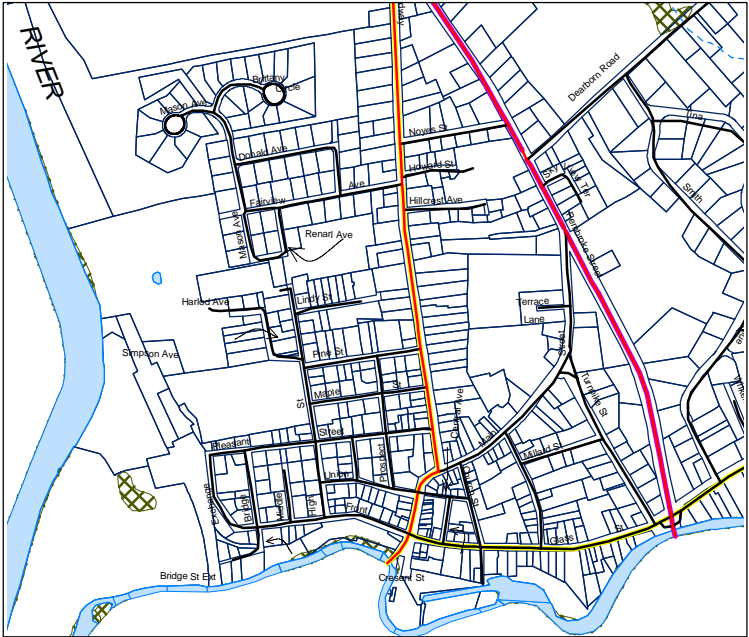


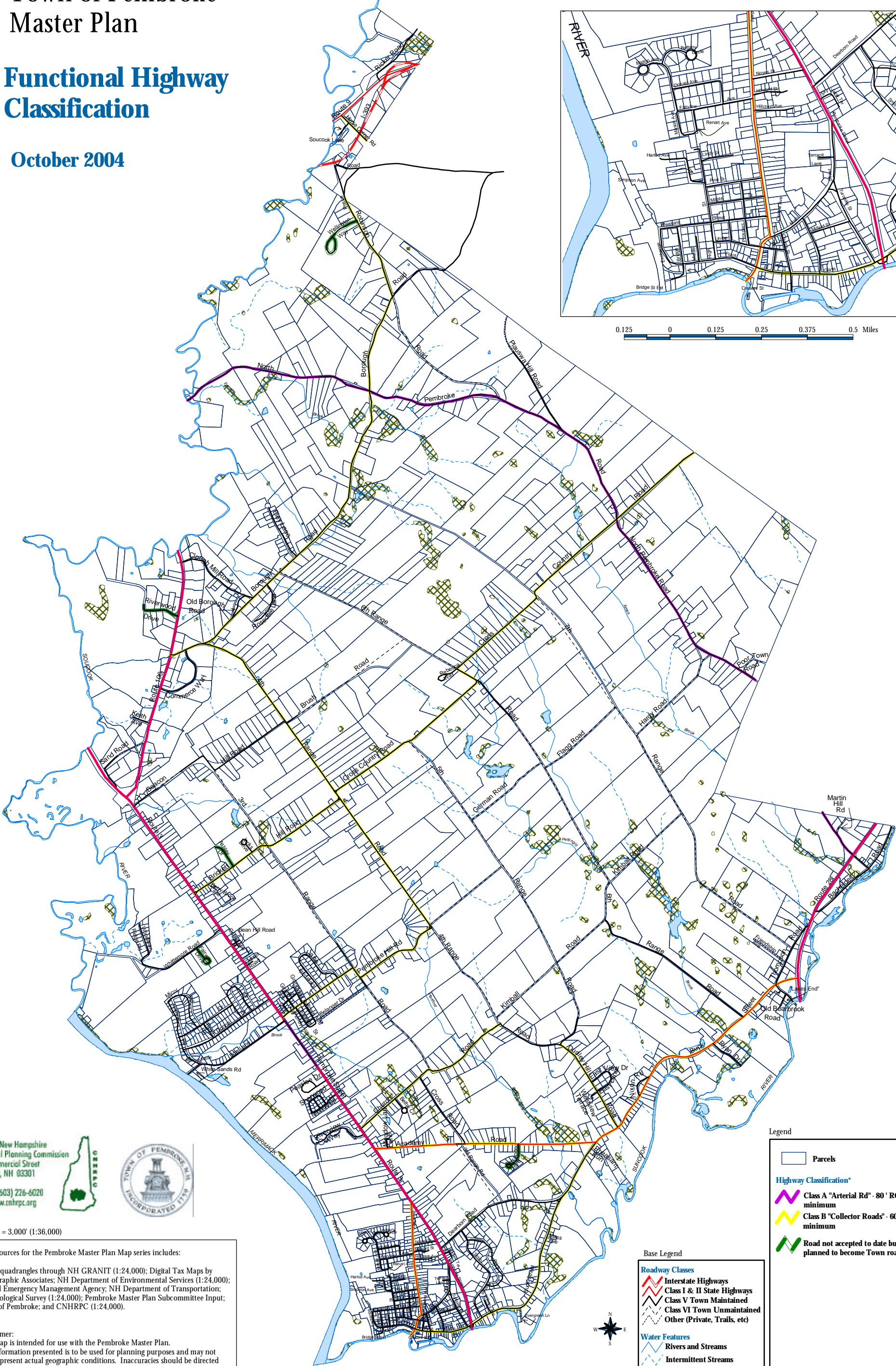
Town of Pembroke Master Plan

Functional Highway Classification

October 2004



0.125 0 0.125 0.25 0.375 0.5 Miles



Central New Hampshire
Regional Planning Commission
28 Commercial Street
Concord, NH 03301
phone (603) 226-6020
web www.cnhrpc.org



Scale 1" = 3,000' (1:36,000)

Data Sources for the Pembroke Master Plan Map series includes:

USGS quadrangles through NH GRANIT (1:24,000); Digital Tax Maps by Cartographic Associates; NH Department of Environmental Services (1:24,000); Federal Emergency Management Agency; NH Department of Transportation; US Geological Survey (1:24,000); Pembroke Master Plan Subcommittee Input; Town of Pembroke; and CNHRPC (1:24,000).

Disclaimer:
This map is intended for use with the Pembroke Master Plan.
The information presented is to be used for planning purposes and may not fully represent actual geographic conditions. Inaccuracies should be directed to the Town of Pembroke or to the Central NH Regional Planning Commission.

1 0 1 2 Miles
2640 0 2640 5280 7920 10560 Feet

Legend

Parcels

Highway Classification*

Class A "Arterial Rd" - 80' ROW minimum
Class B "Collector Roads" - 60' ROW minimum
Road not accepted to date but are planned to become Town roads

Base Legend

Roadway Classes

Interstate Highways
Class I & II State Highways
Class V Town Maintained
Class VI Town Unmaintained
Other (Private, Trails, etc)

Water Features

Rivers and Streams
Intermittent Streams
Water Bodies
National Wetlands Inventory

* Recommended that if Class VI Range Roads are ever opened up as Class V Roads that they become "Collector Roads" (Class B) with 60' ROW