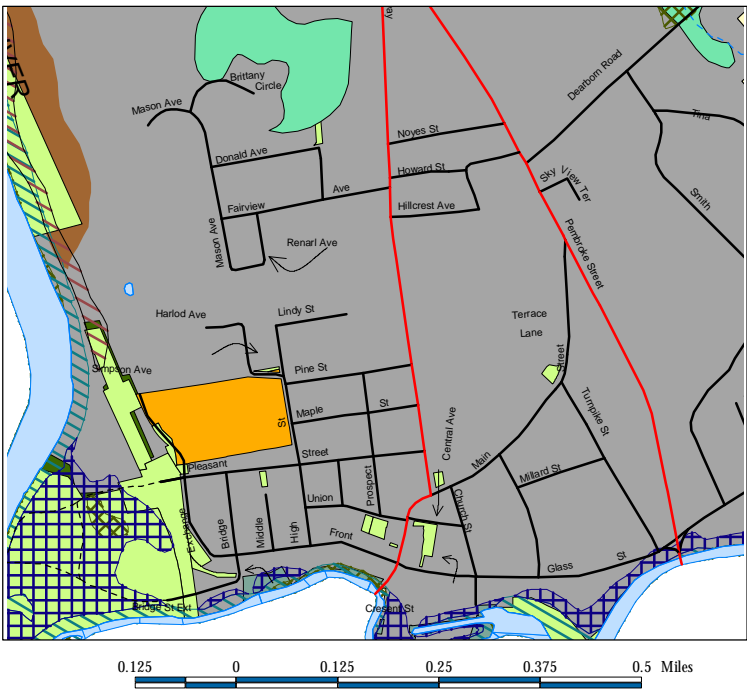
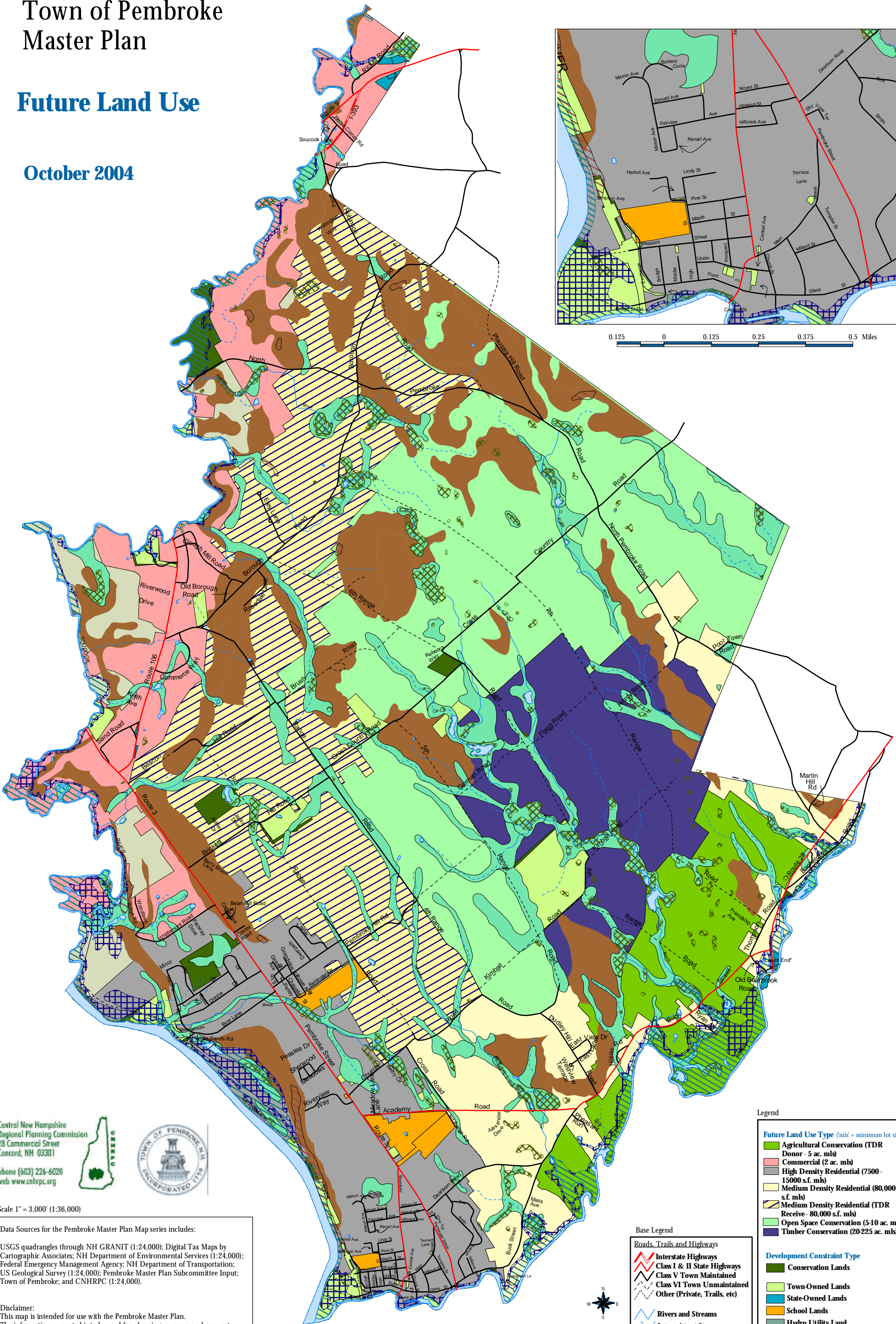


# Town of Pembroke Master Plan

## Future Land Use

October 2004



Central New Hampshire  
Regional Planning Commission  
28 Commercial Street  
Concord, NH 03301  
phone (603) 226-6020  
web www.cnhrpc.org

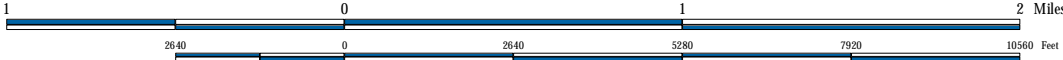


Scale 1" = 3,000' (1:36,000)

Data Sources for the Pembroke Master Plan Map series includes:

USGS quadrangles through NH GRANIT (1:24,000); Digital Tax Maps by Cartographic Associates; NH Department of Environmental Services (1:24,000); Federal Emergency Management Agency; NH Department of Transportation; US Geological Survey (1:24,000); Pembroke Master Plan Subcommittee Input; Town of Pembroke; and CNHRPC (1:24,000).

Disclaimer:  
This map is intended for use with the Pembroke Master Plan.  
The information presented is to be used for planning purposes and may not fully represent actual geographic conditions. Inaccuracies should be directed to the Town of Pembroke or to the Central NH Regional Planning Commission.



Base Legend

- Roads, Trails and Highways**
- Interstate Highways
  - Class I & II State Highways
  - Class V Town Maintained
  - Class VI Town Unmaintained
  - Other (Private, Trails, etc)
- Rivers and Streams**
- Intermittent Streams
  - Water Bodies
- National Wetlands Inventory**
- 100-Year Floodplain
  - 500-Year Floodplain
  - Steep Slopes > 15%

Legend

- Future Land Use Type** (m<sup>2</sup>s' = minimum lot size)
- Agricultural Conservation (TDR Donor - 5 ac. mls)
  - Commercial (2 ac. mls)
  - High Density Residential (7500 - 15000 s.f. mls)
  - Medium Density Residential (80,000 s.f. mls)
  - Medium Density Residential (TDR Receive - 80,000 s.f. mls)
  - Open Space Conservation (5-10 ac. mls)
  - Timber Conservation (20-225 ac. mls)
- Development Constraint Type**
- Conservation Lands
  - Town-Owned Lands
  - State-Owned Lands
  - School Lands
  - Hydro Utility Land
  - Soil Types: Steep Slopes >15%
  - Excavation Lands
  - Hydric Soils