

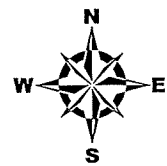
TOWN OF PEMBROKE, NEW HAMPSHIRE

Hazard Mitigation Plan 2017

Map 3: Critical and Community Facilities

Legend

- Dams
- Bridges
- Floodplains
 - 1% Annual Flood Risk
 - 0.2% Annual Flood Risk
- Water Lines
- Sewer Lines
- Natural Gas Lines
 - Tennessee Gas
 - Liberty Natural Gas
- Power Transmission Line
- Roads
 - Interstates
 - Class I and II State Highways
 - Class V Town Maintained Roads
 - Class VI Unmaintained Roads
 - Other Roads/Private
- Town Boundary



0 0.5 1 1.5 2 Miles

This map was produced by the Central NH Regional Planning Commission for the Town of Pembroke Hazard Mitigation Plan Update, March 2016. It is intended for planning purposes only. Funded through NH Homeland Security and Emergency Management and the Federal Emergency Management Agency. Data Sources: NH GRANIT, NH Dept. of Environmental Services, NH Dept. of Transportation, FEMA, CNHRPC, Town of Pembroke, Hazard Mitigation Subcommittee Input. Corrections should be provided to the Town of Pembroke and to CNHRPC.

Central New Hampshire
Regional Planning
Commission
28 Commercial Street, Suite 3
Concord, NH 03301
603.226.6020
www.cnhrpc.org



FEMA

CRITICAL FACILITIES

Essential Facilities

- Pembroke Town Hall
- Safety Center/Police and Fire Departments
- Public Works and Transfer Station
- Town Salt Shed at Public Works
- Tri-Town Ambulance Service In Safety Center

Shelters, Schools, Medical Facilities

- Pembroke Academy
- Three Rivers School
- Pembroke Village School
- Pembroke Hill School
- Green Valley School
- Allenstown Elementary School (Pembroke Town Shelter)
- Suncook Family Dentistry
- Pembroke Wellness Center
- Family Physicians of Pembroke
- Pembroke Animal Hospital
- Strong Foundations (Charter)

Utilities

- Pembroke Water Works Office
- Water Storage Tank
- Water Storage Tank (in Allenstown, not shown)
- Pembroke 1 Water Works Well
- Pembroke 2 Water Works Well
- Pembroke 2 Public Wells/1 Bear Brook Pump Station - Suncook
- Suncook Wastewater Treatment Plant (in Allenstown)
- Sewage Pump Station #2
- Sewage Pump Station #3
- Sewage Pump Station #5
- Sewer Pump Station
- Sewer Department Storage Building
- Public Works Storage Building
- Global Partner Towers (2 cell towers)
- AT&T Cell Tower
- T-Mobile Northeast Cell Tower
- Eversource Substation
- Pembroke Hydro Electric
- Fairpoint Telephone

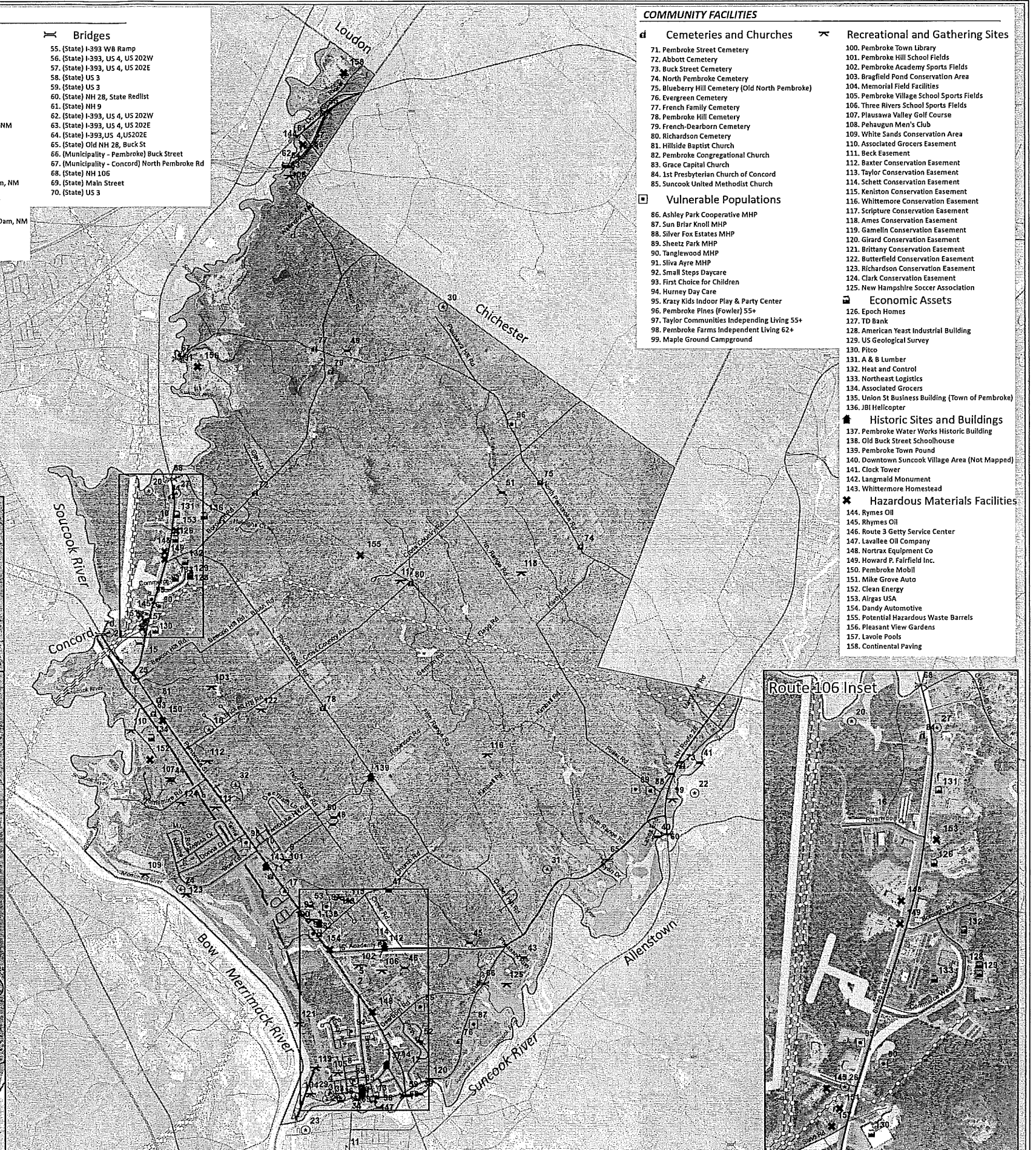
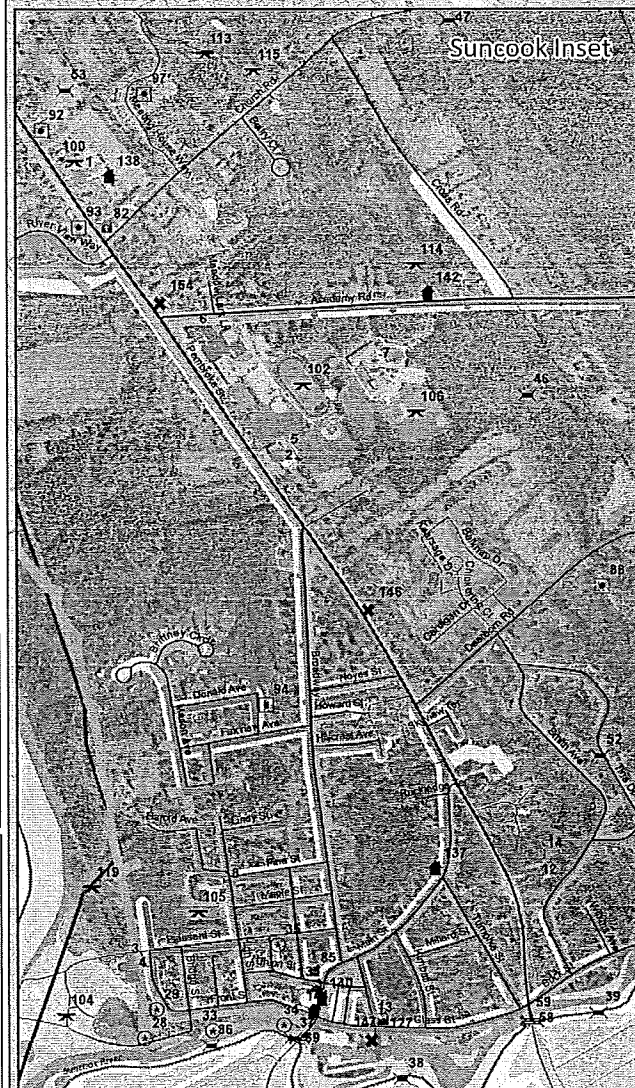
Dams

- 190.01 China Mill Dam, L
- 190.02 Pembroke Dam, L
- 190.03 Webster Mill Dam, S
- 190.04 Sawmill Dam, NM
- 190.05 Buck Street West Dam, L
- 190.06 Actually 004.16
- 190.07 State Game Farm Pond, NM
- 190.09 Farm Pond Dam
- 190.11 Plausawa Country Club Pond, NM
- 190.12 Wildlife Pond Dam, NM
- 190.13 Wildlife Pond Dam, NM
- 190.14 Farm Pond Dam, NM
- 190.15 Wildlife Pond Dam, NM
- 190.16 Recreation Pond Dam
- 190.17 Dale Robinson Farm Pond Dam, NM
- 190.18 Rousseau Dam
- 190.19 Rugged Acres Detention Pond
- 190.2 Colonial Farms Det Pond, NM
- 190.21 Soucook River Dev Det Pond Dam, NM

Hazard Class: NM = Non-Menace,
L = Low, S = Significant

Bridges

- (State) I-393 WB Ramp
- (State) I-393, US 4, US 202W
- (State) I-393, US 4, US 202E
- (State) US 3
- (State) US 3
- (State) NH 28, State Redlist
- (State) NH 9
- (State) I-393, US 4, US 202W
- (State) I-393, US 4, US 202E
- (State) I-393, US 4, US 202E
- (State) Old NH 28, Buck St
- (Municipality - Pembroke) Buck Street
- (Municipality - Concord) North Pembroke Rd
- (State) NH 106
- (State) Main Street
- (State) US 3



COMMUNITY FACILITIES

Cemeteries and Churches

- Pembroke Street Cemetery
- Abbott Cemetery
- Buck Street Cemetery
- North Pembroke Cemetery
- Blueberry Hill Cemetery (Old North Pembroke)
- Evergreen Cemetery
- French Family Cemetery
- Pembroke Hill Cemetery
- French-Dearborn Cemetery
- Richardson Cemetery
- Hillside Baptist Church
- Pembroke Congregational Church
- 1st Presbyterian Church of Concord
- Suncook United Methodist Church

Vulnerable Populations

- Ashley Park Cooperative MHP
- Sun Briar Knoll MHP
- Silver Fox Estates MHP
- Sheetz Park MHP
- Tanglewood MHP
- Sliva Ayre MHP
- Small Steps Daycare
- First Choice for Children
- Hursey Day Care
- Krazy Kids Indoor Play & Party Center
- Pembroke Pines (Fowler) 55+
- Taylor Communities Independent Living 55+
- Pembroke Farms Independent Living 62+
- Maple Ground Campground

Recreational and Gathering Sites

- Pembroke Town Library
- Pembroke Hill School Fields
- Pembroke Academy Sports Fields
- Bragfield Pond Conservation Area
- Memorial Field Facilities
- Pembroke Village School Sports Fields
- Three Rivers School Sports Fields
- Plausawa Valley Golf Course
- Pehaugun Men's Club
- White Sands Conservation Area
- Associated Grocers Easement
- Beck Easement
- Baxter Conservation Easement
- Taylor Conservation Easement
- Schett Conservation Easement
- Keniston Conservation Easement
- Whittemore Conservation Easement
- Scripture Conservation Easement
- Ames Conservation Easement
- Gamelin Conservation Easement
- Girard Conservation Easement
- Brittany Conservation Easement
- Butterfield Conservation Easement
- Richardson Conservation Easement
- Clark Conservation Easement
- New Hampshire Soccer Association

Economic Assets

- Epoch Homes
- TD Bank
- American Yeast Industrial Building
- US Geological Survey
- Pitco
- A & B Lumber
- Heat and Control
- Northeast Logistics
- Associated Grocers
- Union St Business Building (Town of Pembroke)
- JBI Helicopter

Historic Sites and Buildings

- Pembroke Water Works Historic Building
- Old Buck Street Schoolhouse
- Pembroke Town Pound
- Downtown Suncook Village Area (Not Mapped)
- Clock Tower
- Langmaid Monument
- Whittemore Homestead

Hazardous Materials Facilities

- Rymes Oil
- Rymes Oil
- Route 3 Getty Service Center
- Lavallee Oil Company
- Nortrax Equipment Co
- Howard P. Fairfield Inc.
- Pembroke Mobil
- Mike Grove Auto
- Clean Energy
- Algas USA
- Dandy Automotive
- Potential Hazardous Waste Barrels
- Pleasant View Gardens
- Lavoie Pools
- Continental Paving

