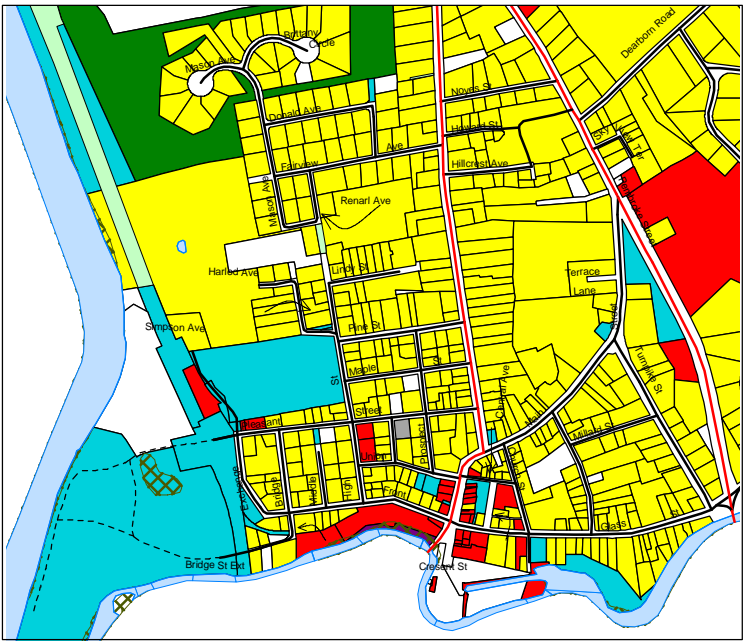
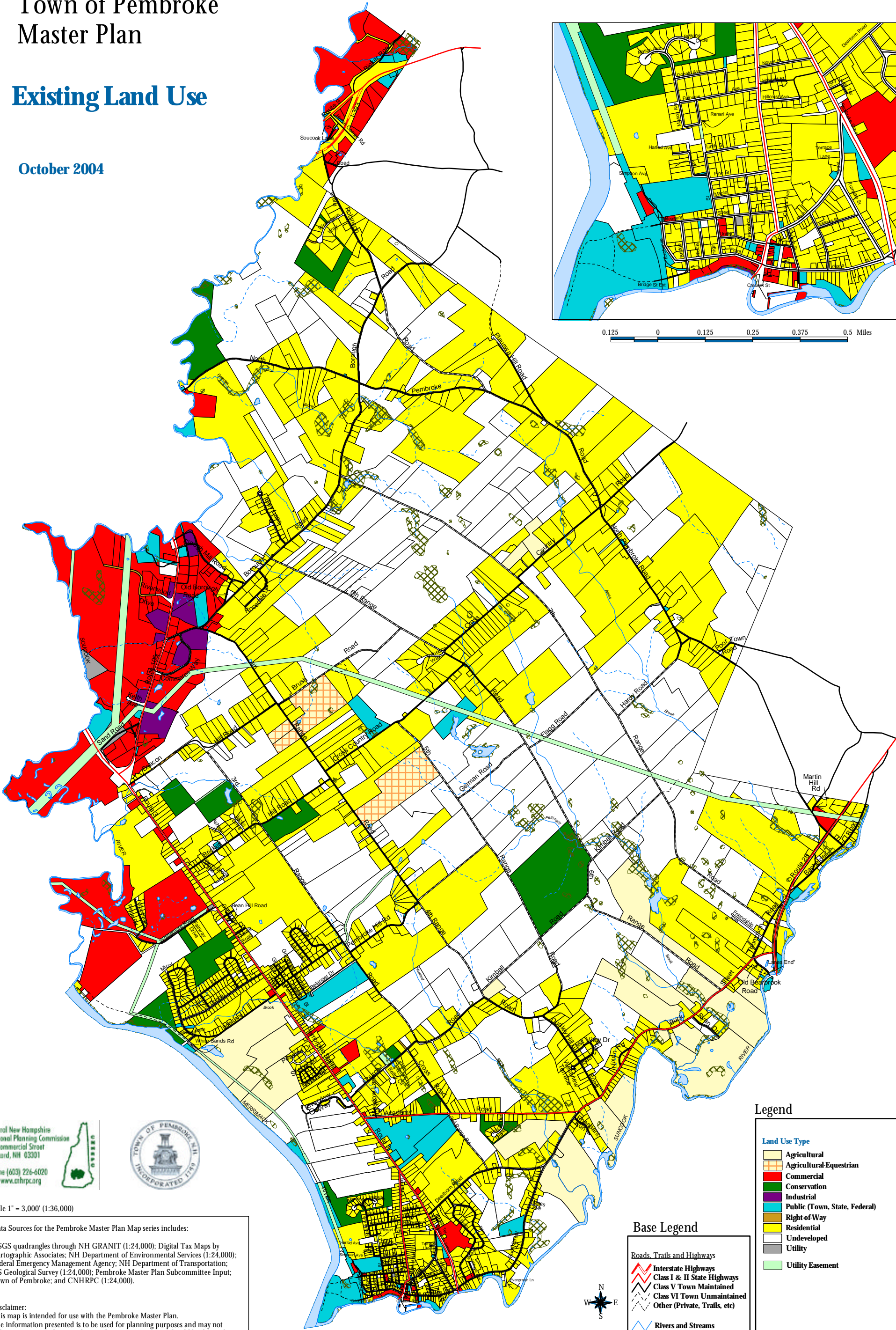


Town of Pembroke Master Plan

Existing Land Use

October 2004



0.125 0 0.125 0.25 0.375 0.5 Miles

Central New Hampshire
Regional Planning Commission
28 Commercial Street
Concord, NH 03301
phone (603) 226-6020
web www.cnhrpc.org



Scale 1" = 3,000' (1:36,000)

Data Sources for the Pembroke Master Plan Map series includes:

USGS quadrangles through NH GRANIT (1:24,000); Digital Tax Maps by Cartographic Associates; NH Department of Environmental Services (1:24,000); Federal Emergency Management Agency; NH Department of Transportation; US Geological Survey (1:24,000); Pembroke Master Plan Subcommittee Input; Town of Pembroke; and CNHRPC (1:24,000).

Disclaimer:
This map is intended for use with the Pembroke Master Plan.
The information presented is to be used for planning purposes and may not fully represent actual geographic conditions. Inaccuracies should be directed to the Town of Pembroke or to the Central NH Regional Planning Commission.

Legend

- Land Use Type**
- Agricultural
 - Agricultural-Equestrian
 - Commercial
 - Conservation
 - Industrial
 - Public (Town, State, Federal)
 - Right of Way
 - Residential
 - Undeveloped
 - Utility
 - Utility Easement

Base Legend

- Roads, Trails and Highways**
- Interstate Highways
 - Class I & II State Highways
 - Class V Town Maintained
 - Class VI Town Unmaintained
 - Other (Private, Trails, etc)
- Rivers and Streams**
- Intermittent Streams
- Water Bodies**
- National Wetlands Inventory

1 0 1 2 Miles
2640 0 2640 5280 7920 10560 Feet