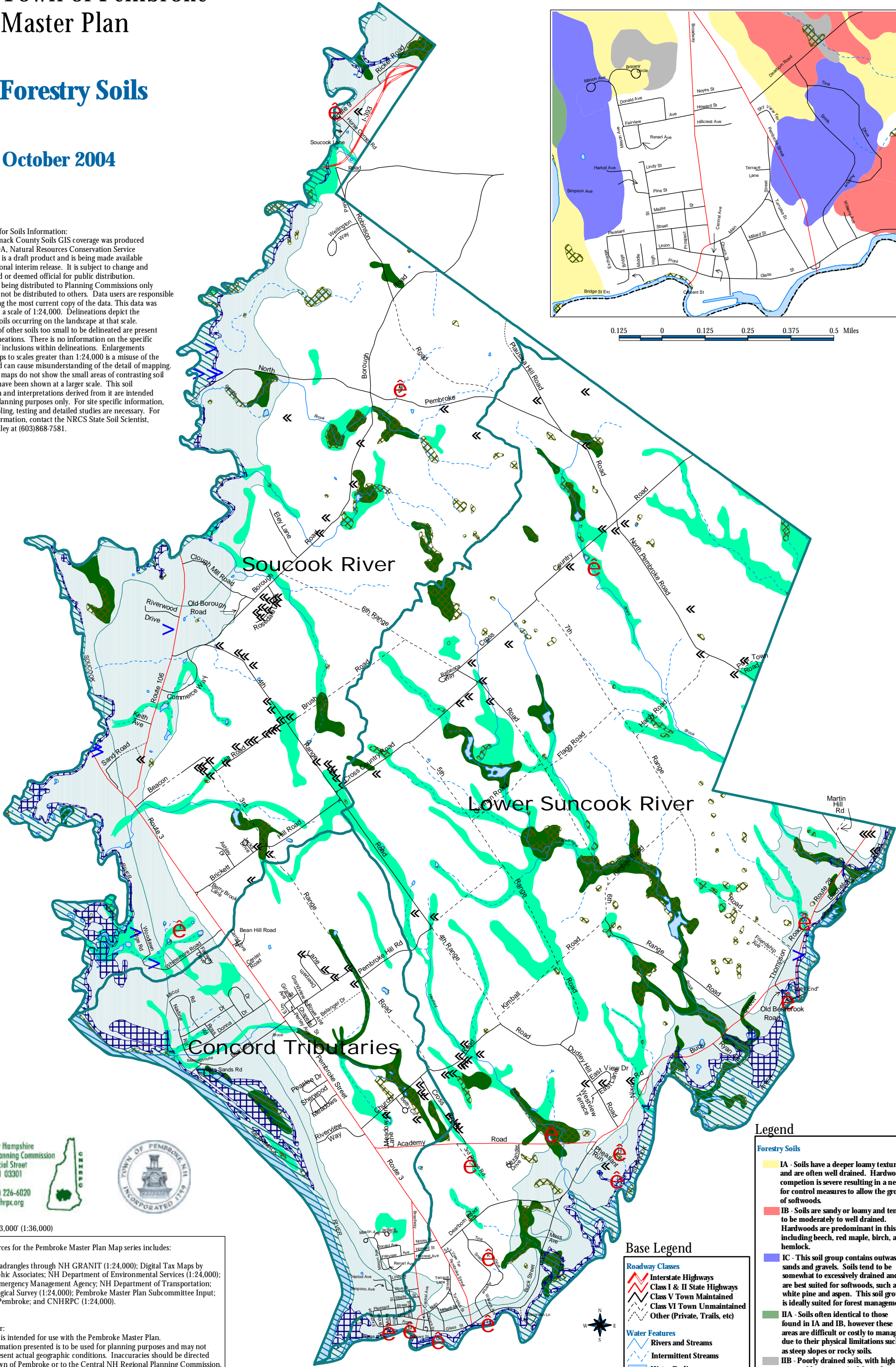
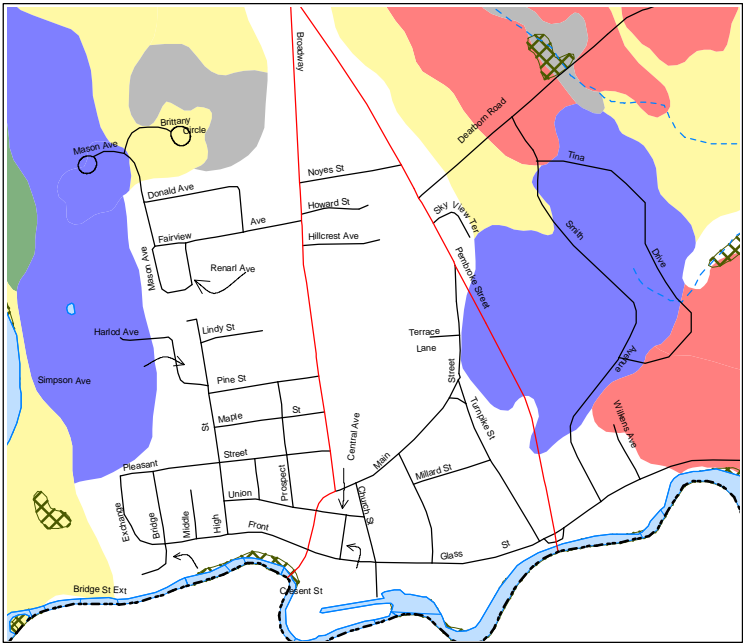


# Town of Pembroke Master Plan

## Forestry Soils

October 2004

**Disclaimer for Soils Information:**  
This Merrimack County Soils GIS coverage was produced by the USDA, Natural Resources Conservation Service (NRCS). It is a draft product and is being made available as a conditional interim release. It is subject to change and not finalized or deemed official for public distribution. This data is being distributed to Planning Commissions only and should not be distributed to others. Data users are responsible for obtaining the most current copy of the data. This data was compiled at a scale of 1:24,000. Delineations depict the dominant soils occurring on the landscape at that scale. Inclusions of other soils too small to be delineated are present within delineations. There is no information on the specific locations of inclusions within delineations. Enlargements of these maps to scales greater than 1:24,000 is a misuse of the product and can cause misunderstanding of the detail of mapping. If enlarged, maps do not show the small areas of contrasting soil that could have been shown at a larger scale. This soil information and interpretations derived from it are intended for broad planning purposes only. For site specific information, onsite sampling, testing and detailed studies are necessary. For further information, contact the NRCS State Soil Scientist, Steve Hundley at (603)868-7581.



Central New Hampshire  
Regional Planning Commission  
28 Commercial Street  
Concord, NH 03301  
phone (603) 226-6020  
web www.cnhrpc.org



Scale 1" = 3,000' (1:36,000)

Data Sources for the Pembroke Master Plan Map series includes:

USGS quadrangles through NH GRANIT (1:24,000); Digital Tax Maps by Cartographic Associates; NH Department of Environmental Services (1:24,000); Federal Emergency Management Agency; NH Department of Transportation; US Geological Survey (1:24,000); Pembroke Master Plan Subcommittee Input; Town of Pembroke; and CNHRPC (1:24,000).

**Disclaimer:**  
This map is intended for use with the Pembroke Master Plan. The information presented is to be used for planning purposes and may not fully represent actual geographic conditions. Inaccuracies should be directed to the Town of Pembroke or to the Central NH Regional Planning Commission.



**Base Legend**

**Roadway Classes**

- Interstate Highways
- Class I & II State Highways
- Class V Town Maintained
- Class VI Town Unmaintained
- Other (Private, Trails, etc)

**Water Features**

- Rivers and Streams
- Intermittent Streams
- Water Bodies
- National Wetlands Inventory

**Legend**

**Forestry Soils**

- IA** - Soils have a deeper loamy texture and are often well drained. Hardwood competition is severe resulting in a need for control measures to allow the growth of softwoods.
- IB** - Soils are sandy or loamy and tend to be moderately to well drained. Hardwoods are predominant in this soil including beech, red maple, birch, and hemlock.
- IC** - This soil group contains outwash sands and gravels. Soils tend to be somewhat to excessively drained and are best suited for softwoods, such as white pine and aspen. This soil group is ideally suited for forest management.
- IIA** - Soils often identical to those found in IA and IB, however these areas are difficult or costly to manage due to their physical limitations such as steep slopes or rocky soils.
- IIB** - Poorly drained soils, with high water tables, most suited for red maple, balsam fir, spruce, and hemlock. Forest management on these soils is often limited due to poor soil drainage.