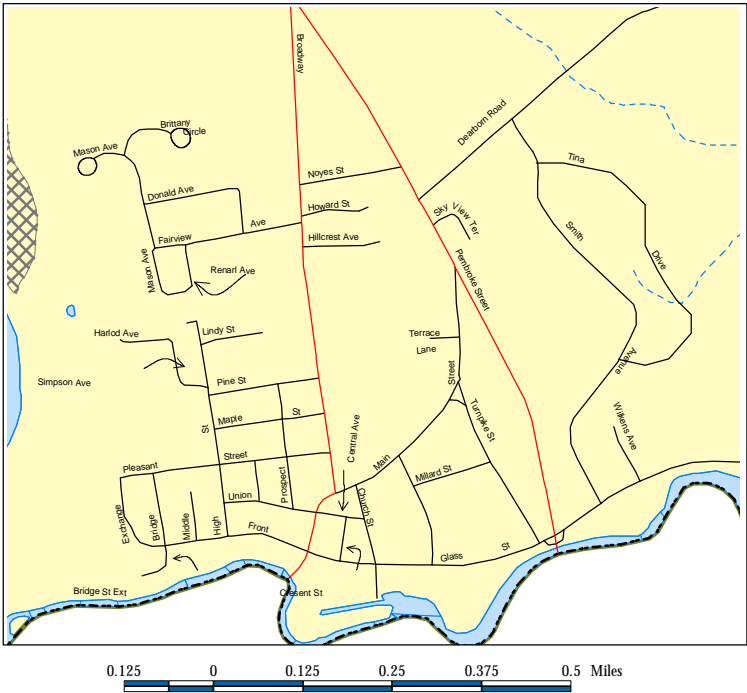
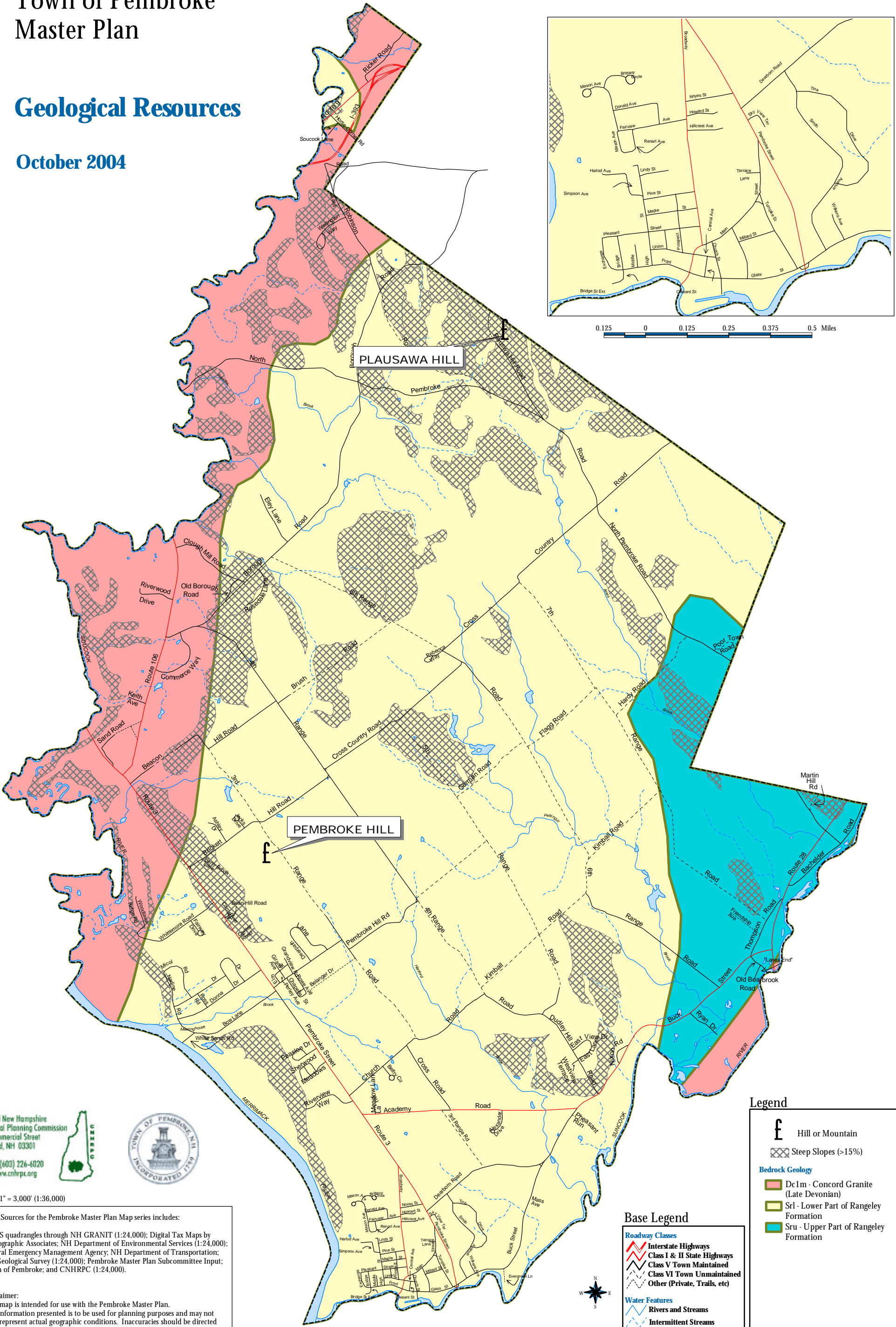


Town of Pembroke Master Plan

Geological Resources

October 2004



Central New Hampshire
Regional Planning Commission
28 Commercial Street
Concord, NH 03301

phone (603) 226-6020
web www.cnhrpc.org

Scale 1" = 3,000' (1:36,000)

Data Sources for the Pembroke Master Plan Map series includes:

USGS quadrangles through NH GRANIT (1:24,000); Digital Tax Maps by Cartographic Associates; NH Department of Environmental Services (1:24,000); Federal Emergency Management Agency; NH Department of Transportation; US Geological Survey (1:24,000); Pembroke Master Plan Subcommittee Input; Town of Pembroke; and CNHRPC (1:24,000).

Disclaimer:
This map is intended for use with the Pembroke Master Plan.
The information presented is to be used for planning purposes and may not fully represent actual geographic conditions. Inaccuracies should be directed to the Town of Pembroke or to the Central NH Regional Planning Commission.

Legend

Hill or Mountain

Steep Slopes (>15%)

Bedrock Geology

Dc1m - Concord Granite (Late Devonian)

Srl - Lower Part of Rangeley Formation

Sru - Upper Part of Rangeley Formation

Base Legend

Roadway Classes

Interstate Highways

Class I & II State Highways

Class V Town Maintained

Class VI Town Unmaintained

Other (Private, Trails, etc)

Water Features

Rivers and Streams

Intermittent Streams

Water Bodies

