

Town of Pembroke

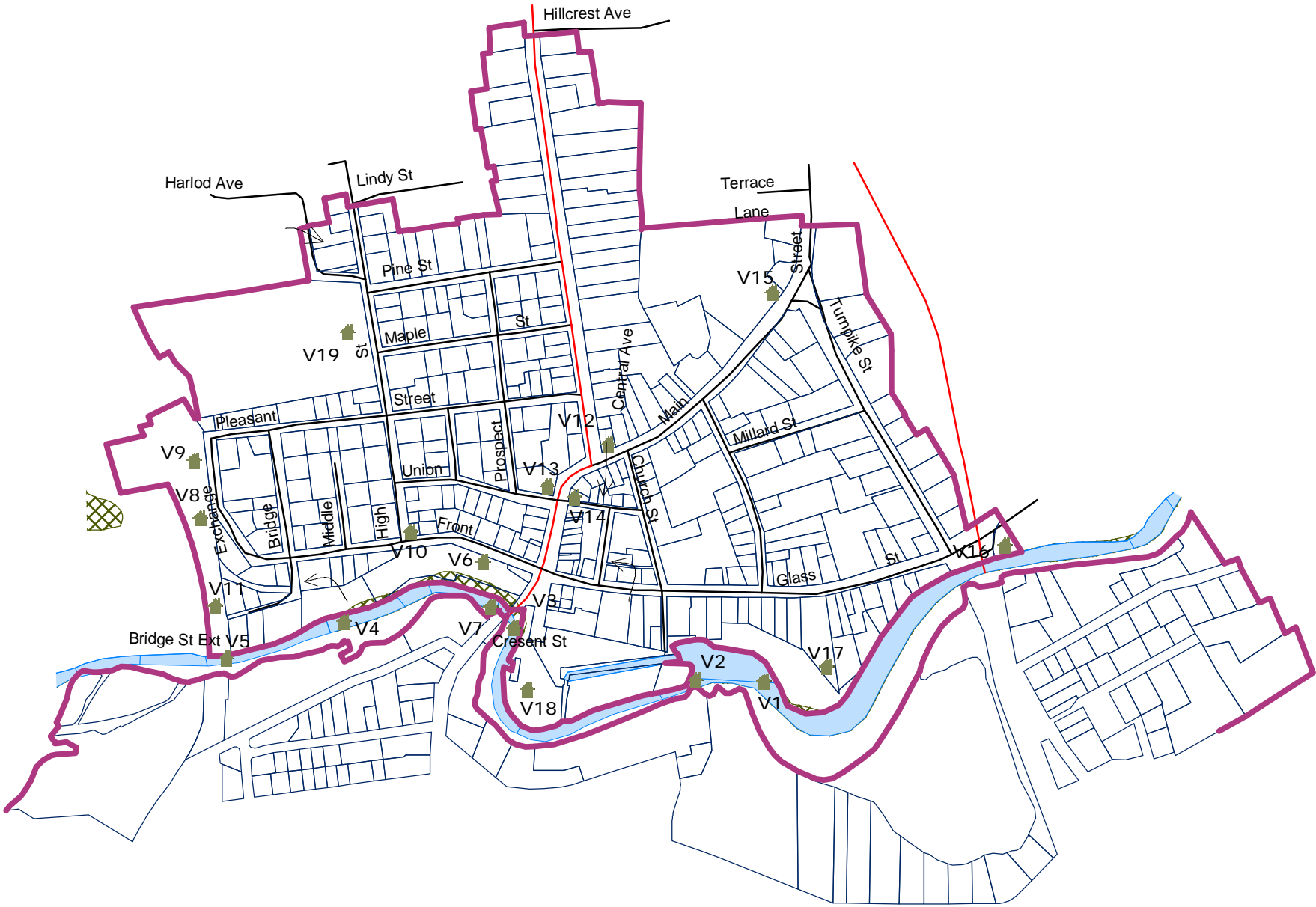
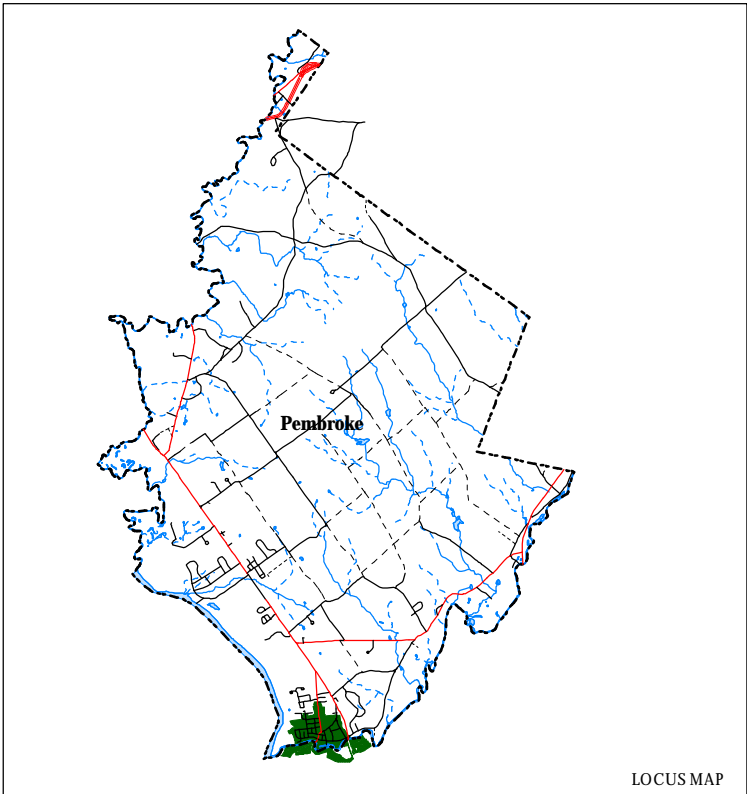
Master Plan

Suncook Village

Historical Features

October 2004

INDEX	NAME	CARTER & FOWLER #
V1	Cochran Dam Site	110
V2	Webster Dam	108
V3	Old Bridge, near Main Street bridge	96
V4	China Dam	272
V5	Stone arched railroad bridge	
V6	Pembroke Mill	30
V7	Pembroke Mill Dam	
V8	Passenger Depot Site	3
V9	Freight Depot Site	1
V10	Old Police Station (1870)	34
V11	Old Bridge Site	21
V12	Baptist Church Site, 1879	174
V13	Methodist Church	42
V14	Baptist Church Site, 1871-78	50
V15	School House, now Pembroke Water Works	161
V16	Grist Mill Site	147
V17	Site of Chelmsford Glass Company (Suncook Glassworks)	134
V18	Webster Mill Site	102
V19	Village School, 1908	



Central New Hampshire
Regional Planning Commission
28 Commercial Street
Concord, NH 03301
phone (603) 226-6020
web www.cnhrpc.org

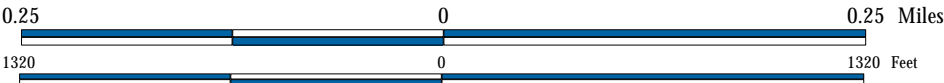


Scale 1" = 600' (1:7,200)

Data Sources for the Pembroke Master Plan Map series includes:

USGS quadrangles through NH GRANIT (1:24,000); Digital Tax Maps by Cartographic Associates; NH Department of Environmental Services (1:24,000); Federal Emergency Management Agency; NH Department of Transportation; US Geological Survey (1:24,000); Pembroke Master Plan Subcommittee Input; Town of Pembroke; and CNHRPC (1:24,000).

Disclaimer:
This map is intended for use with the Pembroke Master Plan.
The information presented is to be used for planning purposes and may not fully represent actual geographic conditions. Inaccuracies should be directed to the Town of Pembroke or to the Central NH Regional Planning Commission.



Base Legend

- Roadway Classes**
 - Interstate Highways
 - Class I & II Secondary State Highways
 - Class V Town Maintained Roads
 - Class VI Town Unmaintained Roads
 - Other Roads (Private, Trails, etc)
- Water Features**
 - Rivers and Streams
 - Intermittent Streams
 - Water Bodies
 - National Wetlands Inventory



Legend

- Unique/Historic Resource
- Suncook Village Boundary*
- Parcels

*SEE HISTORIC FEATURES MAP FOR ADDITIONAL INFORMATION